

Our starting point is that <Ka> and <Ma> regular and opposite follow "Ometagui" as UrForm.

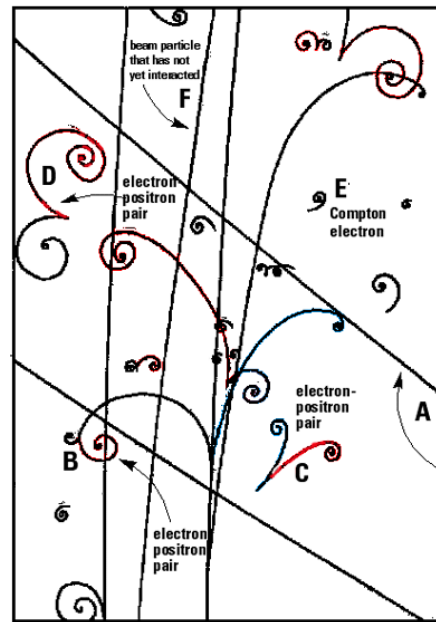


fig. Similarity with regular and opposite Pair Production

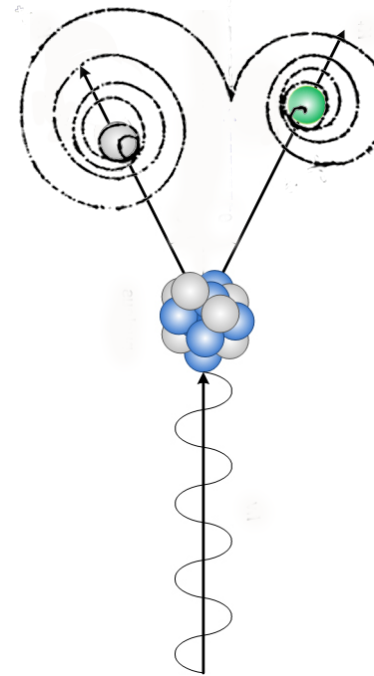


fig. Similarity with Light and Matter interaction



fig. Similarity with Male and Female Hetero-philicity

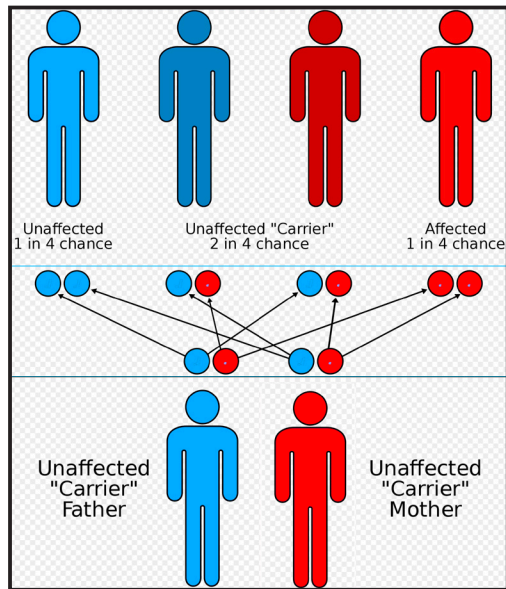


fig. Pair Production
<http://electrons.wikidot.com/pair-production-and-annihilation>

fig. Tracking Particle Paths
https://www.pbs.org/wgbh/nova/teachers/activities/3012_elegant_05.html
<https://www.scienceinschool.org/content/track-inspection-how-spot-subatomic-particles>

fig. Allele
<https://en.wikipedia.org/wiki/Allele>

fig. Similarity with Allele

Oppositely coexisting pairs of DNA genes

<i>Axiom K-6 Ometagui</i>	
6-1,	<i>Regular-Opposite Hetero-philicity</i>
6-1,	<i>Regular-Opposite Homogeneous repulsion</i>
6-1,	<i>Regular-Opposite Conjugate</i>
6-2,	<i>Sanetachine</i>
6-2,	<i>Regular-Opposite 4 Phases Transition</i>
6-2,	<i>Female and male 4 Phases Transition</i>
6-3,	<i>Tsugahi</i>
6-3,	<i>Regular-Opposite Affinity power Field</i>
6-4,	<i>Wakumusubi</i>
6-4,	<i>Regular-Opposite Stable shape maintainability</i>

fig. The illustrations of Fux (right) and Nuwa (left) show stories related to the creation of life. This story of creation can be seen as a pair of male and female. The original illustration, according to Wikipedia, is An ancient painting of Fuxi (right) and Nüwa (left) unearthed in the Astana Cemetery, Xinjiang. Fuxi (right) has a Square and Nuwa (left) has a Compass. In my imagination, it looks like "Square = Ma" and "Compass = Ka".

copyright © 2019.8.20 masaki Yoshino
<https://kamu-number.com/>

Arakamichi (1-8) The Field with One Element : Ometagui Regular-opposite-Pair Production , Similarity with light-matter interaction